

INTEGRATED DELIVERY SCHEDULE 2022 UPDATE

SOUTH FLORIDA ECOSYSTEM RESTORATION | CENTRAL AND SOUTHERN FLORIDA COMPREHENSIVE EVERGLADES RESTORATION PLAN



The Comprehensive Everglades Restoration Plan (CERP) is the largest aquatic ecosystem restoration effort in the nation, spanning over 18,000 square miles, and is designed to improve the health of more than 2.4 million acres. The Integrated Delivery Schedule (IDS) is a forward-looking snapshot of upcoming planning, design, and construction schedules and programmatic costs at a "top" line level for the South Florida Ecosystem Restoration (SFER) Program – including CERP, Modified Water Deliveries to Everglades National Park, the Critical Projects Program, Kissimmee River Restoration, and non-CERP Central and Southern Florida (C&SF) projects.

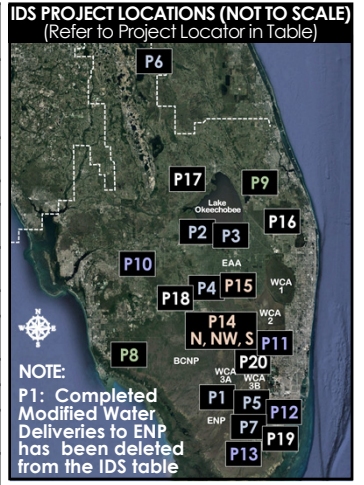
The IDS reflects the sequencing strategy for planning, design, and construction and does not include costs for work completed in other fiscal years or land acquisition. The IDS does not require an agency action and is not a decision document. It is a tool that provides information to decision-makers – a living document that is updated as needed to reflect progress and/or program changes. The IDS synchronizes program and project priorities with the State of Florida and achieves the CERP restoration objectives at the earliest practicable time, consistent with funding constraints and the interdependencies between project components.

Although non-CERP and Foundation projects upon which the CERP is dependent are reflected in the IDS schedule, they are not included in the funding scenario. These projects are funded through other program authorities or by other entities. Restoration projects by others are also not included but are considered during planning.

Note: The IDS serves the purpose of the Master Sequencing and Implementation Plan (MISP) described in the original CERP plan (Yellow Book). Funding shown for Fiscal Year 24 (Fiscal Year, October 1- September 30) and beyond is only notional, representing approximate funding levels that would be needed to sustain the work displayed in the IDS for any particular fiscal year. The funding does not represent a commitment by the Administration to budget the amounts shown.

Projects completed in prior years have been removed from the 2022 IDS.

	FEDERAL			NON-FEDERAL MULTIPLE AGENCIES	GRAND TOTAL
	USACE	DOI	TOTAL		
Modified Water Deliveries to ENP	\$ 78	\$ 317	\$ 395	-	\$ 395
Critical Projects	\$ 89	-	\$ 89	\$ 88	\$ 177
Kissimmee River Restoration	\$ 405	-	\$ 405	\$ 401	\$ 806
C&SF Non-CERP	\$ 774	\$ 52	\$ 826	\$ 227	\$ 1,053
C&SF CERP	\$ 1,818	\$ 112	\$ 1,930	\$ 1,939	\$ 3,869
C&SF CERP, to be credited	-	-	-	\$ 1,183	\$ 1,183
TOTAL SFER	\$ 3,163	\$ 482	\$ 3,645	\$ 3,838	\$ 7,483
Herbert Hoover Dike	\$ 1,506	-	\$ 1,506	\$ 100	\$ 1,606
Restoration Strategies and ECP	-	-	-	\$ 2,229	\$ 2,229



NOTE: P1: Completed Modified Water Deliveries to ENP has been deleted from the IDS table

Non-federal	++	Design, PPA Execution, Real Estate Acquisition
Fiscal Closeout	W	Construction (Initiated by award of construction contract)
Monitoring	●xxxx●	Operational Plan
	●xxxx●	Operational Testing and Monitoring Period

SCAN THIS CODE FOR QUICK ACCESS TO A DIGITAL COPY OF THE IDS



PROJECT LOCATOR	PROJECT	YELLOW BOOK COMPONENT	FISCAL YEAR (DOLLARS IN MILLIONS) ¹												
			2021	2022 W	2023	2024 W	2025	2026 W	2027	2028 W	2029	2030 W	2031	2032 W	2033
	Planning Estimates Federal Construction Cost (SFER) ⁺⁺		\$ 250	\$ 352	\$ 1,128										
	Planning Estimates Non-Federal Construction Cost (SFER) ⁺⁺		\$ 258	\$ 332	\$ 343	\$ 1,386	\$ 1,157	\$ 840	\$ 894	\$ 849	\$ 484	\$ 278	\$ 138	\$ 25	\$ 25
	Planning Estimates Total Construction Cost (SFER) ⁺⁺		\$ 508	\$ 679	\$ 1,471										
NON-CERP AND FOUNDATION															
P2	Herbert Hoover Dike ³	N/A Non-CERP													
P3	Lake Okeechobee System Operating Manual ³														
P4	Restoration Strategies ³														
P5	Tamiami Trail Next Steps (TINS) Phase 2 ³														
P6	Kissimmee River Restoration (KRR) Construction														
	KRR - Development of Operational Transition Plan/Evaluation Monitoring														
	C-111 South Dade Construction (complete)														
P7	C-111 South Dade - S-332 B Pump Station Replacement														
	C-111 South Dade - S-332 C Pump Station Replacement														
CERP GENERATION 1 (AUTHORIZED IN WRDA 2007)															
P8	Picayune Strand Restoration	OPE													
	Flood Protection Features - Conveyance														
	Flood Protection Features - Levee														
	Road Removal														
	Canal Plugging														
P9	Indian River Lagoon-South														
	C-44 Reservoir	B													
	C-44 STA and Pump Station	B													
	C-23/24 Reservoir North	UU Phase 1													
	C-23/24 Reservoir South	UU Phase 1													
	C-23/24 STA	UU Phase 1													
	C-25 Reservoir and STA	UU Phase 2													
P10	C-23/C-44 Interconnect (Estuary Discharge Diversion)														
	Natural Water Quality Storage Areas, Muck Removal and Artificial Habitat Creation (Phase 2) - Director's Report and PPA - After Execution, SFWMD Leading Design and Construction														
CERP GENERATION 2 (AUTHORIZED IN WRDA 2014)															
P10	Caloosahatchee River (C-43) West Basin Storage														
	C-43 Reservoir														
	C-43 Pump Station	D													
P11	Broward County Water Preserve Areas														
	C-11 Impoundment	Q													
	WCA 3A and 3B Seepage Management	O													
	C-9 Impoundment	R													
P12	Biscayne Bay Coastal Wetlands Phase 1	FFF, OPE, Phase 1													
	L-31 East Flow-way S-709 Pump Station (PS)														
	L-31 East Flow-way S-705 PS														
	L-31 East Flow-way S-703 PS														
	L-31 East Flow-way S-710 PS, S-711 PS, and C-711W Seepage Canal														
	Cutter Wetlands														
P13	C-111 Spreader Canal Western Project (Requires PPA – to be Reconciled in Parallel to BBSEER) SFWMD Led Design and Construction	WW, Phase 1													
CERP GENERATION 3 (AUTHORIZED IN WRDAS 2016, 2018, 2020)															
P14	Central Everglades Planning Project	AA, FF, H, QQ P1, G													
	Decomp Physical Model (work performed under Master Design Agreement)	QQ													
P14S	CEPP South: Additional Outlet Structures Needed to Move More Water South	AA, FF, H, QQ													
	Validation Report - S-152 and Backfill Treatments														
	S-152 and Existing Backfill Treatments (Permanent)														
	L-67A Structures S-631, S-632, S-633 and Gap in L-67C Levee S Spoil Removal														
	Increase S-356E Pump Station and S-334E Gated Spillway														
	Demolition of Existing S-356 Pump Station														
	Gated Spillway S-355W														
	Removal of L-67C, Construct L-67D Levee and Gap in L-67C Levee N														
	Removal of L-29 Levee and L-67 Extension Levee, Backfill L-67 Ext Canal														
P14N	CEPP North: Inflow Facilities Needed to Restore Northern WCA-3A and Move Additional Water South to Everglades	QQ, II													
	Validation Report														
	L-4 Degrade, Pump Station S-630														
	S-8 Pump Station Modifications														
	L-6 Diversion														
	Miami Canal Backfill/Vegetated Hammocks														
	L-5 Canal Improvements														
P14NW	CEPP New Water: Seepage Management Needed to Move More Water into the Everglades	V													
	Validation Report														
	Seepage Barrier Wall														
P15	CEPP EAA: Moves New Water South, Stores it, and Treats it Before Going to the Everglades ⁴	G, C, E													
	EAA Reservoir - A-2 STA														
	EAA Reservoir - Canal Conveyance Improvements to North New River and Miami River Canals														
	EAA Reservoir - Seepage Canal (7.2 miles) and Inflow/Outflow Canal														
	EAA Reservoir - Foundation and Cutoff Wall														
	EAA Reservoir - Embankment, Outlet Works and Inline Spillway														
	EAA Reservoir - S-636 Seepage Pump Station														
	EAA Reservoir - Inflow Pump Station														
CERP GENERATION 4 (AUTHORIZED IN WRDA 2020)															
P16	Loxahatchee River Watershed Restoration Project	K, OPE													
	Flow-way 1 (M-1 Canal, G160/161 and Grassy Water Preserve)														
	Flow-way 2 (C-18 Impoundment)														
	Flow-way 2 (ASR Wells)														
	Flow-way 3 (Gulf Stream West, Nine Gems, Culpepper, Moonshine, Hobe Grove, and Kitching Creek)														
PLANNING PHASE															
P17	Lake Okeechobee Watershed Restoration Project ⁵	A, GG	XXXXXX	XXXXXX	XXXXX										
	ASR Wells - Design and Implementation by SFWMD														
P18	Western Everglades Restoration Project ⁵	RR, CCC	XXXXXX	XXXXXX	XXXXXX										
P19	Biscayne Bay Southeastern Everglades Ecosystem Restoration (BBSEER) ⁵	BBB, FFF, HHH, WW, XX, OPE	XXXXXX	XXXXXX	XXXXXX	XXXXXX	XXXXXX								
P20	Southern Everglades ⁵	BB, CC, EEE, GG, QQ, S, U, VV, ZZ													
N/A	PENDING: Please refer to the CERP Components Map on Page 2 (Start of "Pending" CERP Component Feasibility Studies will be informed by the technical evaluations including input from the Science Coordination Group, RECOVER, periodic CERP update analysis, and engagement with the public.)	A, DDD, F, VV, X, Y, KK, LL, OPE(4), Phased (D,H, M,W,AA,FF,GGG, OPE(1))													

FOOTNOTES:
 1: Once authorized, the design and construction of current planning projects will increase annual estimates and extend beyond FY2033.
 2: FY 2022 and beyond includes allocation for Bipartisan Infrastructure Law funds.
 3: Funded through other program authorities or by other entities.
 4: Requires WCA-3 outlet and conveyance structures to maximize operational flexibility.
 5: Construction and funding TBD.



THE RESTORATION FRAMEWORK

OPERATIONS IN SYNC WITH PROJECT DELIVERY

Restoration activities, including operational components recommended in the CERP, occur within the context of the larger, actively operated C&SF system. The C&SF Project includes 1,000+ miles of canals and levees and several hundred water control structures and pump stations providing the C&SF Congressionally authorized purposes of flood control, water supply, navigation, regional groundwater control, prevention of saltwater intrusion, recreation, and preservation of fish and wildlife.

COMPONENTS AND PROJECTS

The CERP identified 68 components that can contribute significantly to “getting the water right” and restoring the health of the ecosystem. Through a rigorous planning process, the components described in the CERP “Yellow Book” are combined into 50+ implementable projects that become part of the Integrated Delivery Schedule (IDS).



EXPANDING THE RECOVER FOOTPRINT



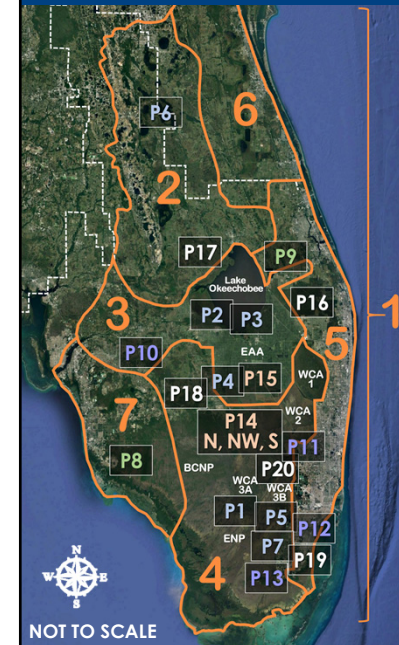
The Comprehensive Everglades Restoration Plan (CERP) footprint is sub-divided into similar landscapes, each representing a REStoration, COOrdination, VERification (RECOVER) module where monitoring is applied to address uncertainties and inform progress toward achieving CERP goals and objectives. In October 2021 RECOVER initiated development of a Southwest Florida Module to apply RECOVER’s programmatic evaluation and assessment framework to the Greater Big Cypress Basin (GBCB). The GBCB is more than just a single self-contained watershed, the conservation lands within the region function as a central hub in the southern Florida peninsula that contain and connect multiple watersheds between the Big Cypress and Everglades ecosystems.

The overlap with the Greater Everglades and Southern Coastal Systems modules was purposeful. Overlap allows regional experts to work together in areas of the system that are more varied in character such as transitional areas between forested wetlands and sawgrass prairies, and inland and coastal systems. Overlap increases coordination and communication between regions and enhances RECOVER’s system-wide assessment mission.

Getting the water right throughout the GBCB could translate to more natural downstream flows to the Tribal Reservations, Everglades National Park, Big Cypress National Preserve, Florida Panther National Wildlife Refuge, Fakahatchee Strand Preserve State Park and the upper southwestern coast. This new RECOVER Module gives the western regions a voice at the Everglades restoration table and potentially paves the way towards a path to improved evaluation and assessment tools. Formulation of this module increases the extent of Everglades wetland system-wide knowledge and increases the understanding of the needs associated with each region. It also provides a means to evaluate CERP performance across the entirety of the CERP footprint and gain knowledge to reduce uncertainties to further inform CERP design and implementation.



SOM VOLUMES BY REGION



System Operating Manuals: The Critical Last Step in Getting the Water Right and Achieving Maximum System-wide Benefits

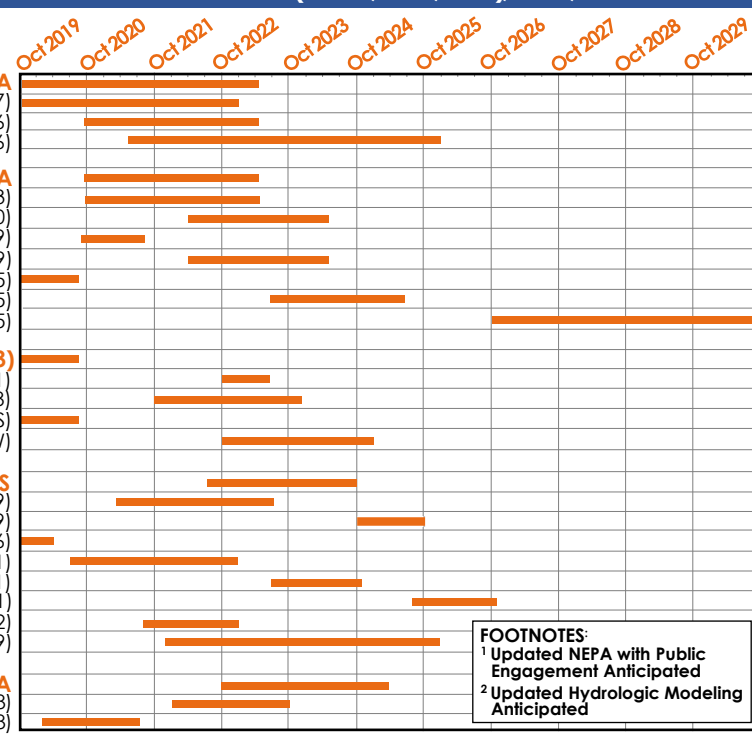
Operating Manuals are the set of documents that describe how to operate components of the C&SF Project and CERP projects to ensure the goals and purposes of the projects are achieved. Operating Manuals for the CERP consist of a System Operating Manual (SOM) and Project Operating Manuals (POMs). Draft Project Operating Manuals (DPOMs) are initially developed during the planning phase of project delivery.

- The SOM consists of 7 Volumes, organized according to geographical regions, that collectively provide a system-wide framework for the operation of components of the C&SF Project and CERP projects to ensure that projects function in a coordinated, systematic way.
- Updates to Operating Manuals: The Programmatic Regulations require that POMs be updated, as appropriate, for project construction and operational testing and monitoring phases, as well as when relevant CERP and non-CERP components come online. In turn, SOM Volumes are updated to include new or updated POMs.

IDS CONSTRUCTION RELEVANT * SCHEDULES FOR SOM VOLUME, WATER MANAGEMENT OPERATING CRITERIA (DPOM, POM, WCP), NEPA, AND MODELING

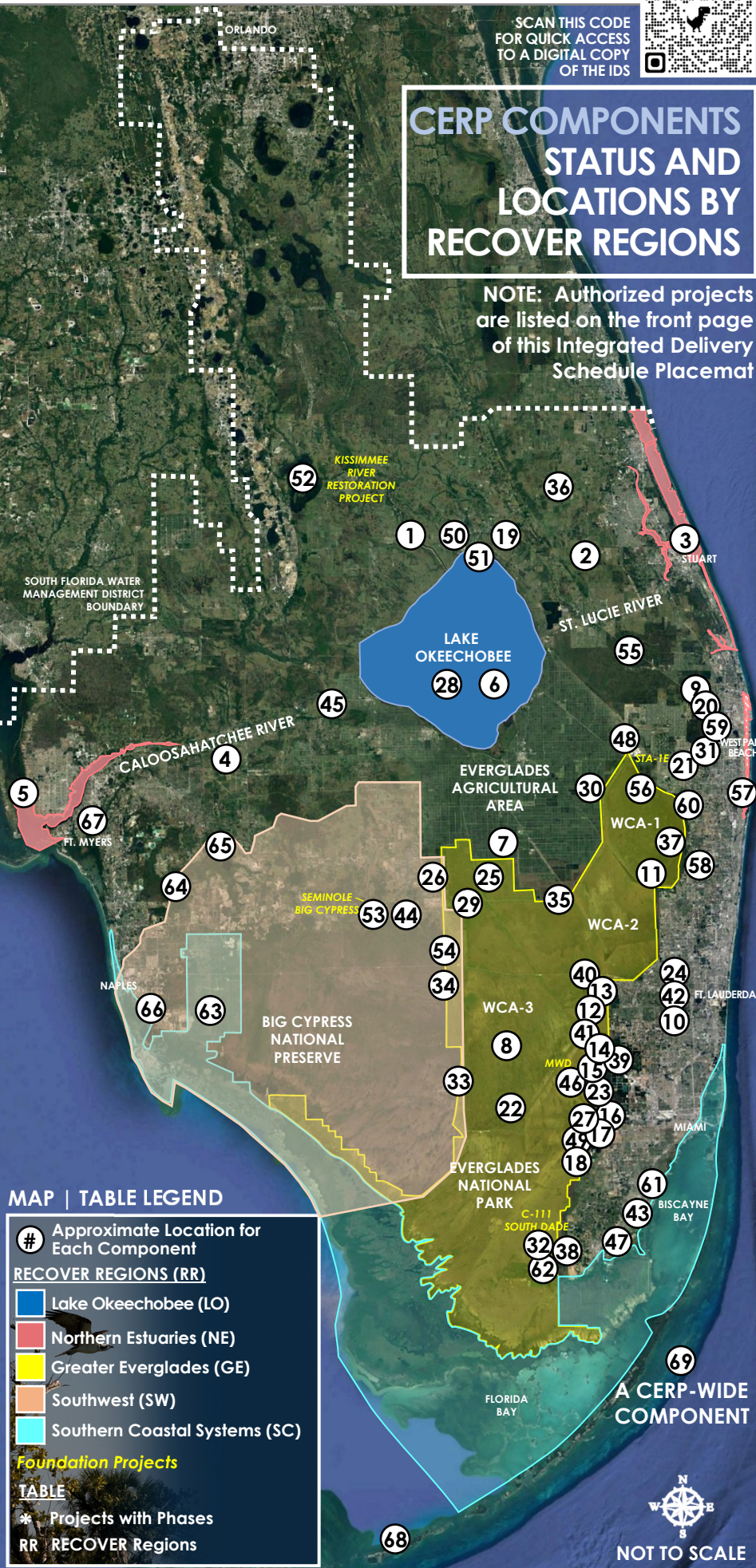
Existing water control manuals (WCMs), water control plans (WCPs), and POMs will continue to govern operations until SOM Volumes are finalized.

- SOM VOLUME 2: KISSIMMEE RIVER-LAKE ISTOKPOGA**
 - 1,2 Lake Okeechobee Watershed Restoration Project DPOM (P17)
 - 1,2 Kissimmee River Restoration WCP: Increment 1 Temporary Deviation (P6)
 - 1,2 Development of Operational Transition Plan (P6)
- SOM VOLUME 3: LAKE OKEECHOBEE - EAA**
 - 1,2 Lake Okeechobee - EAA WCP: LOSOM (P2; P3)
 - 1,2 C-43 West Basin Storage POM Update (P10)
 - 1,2 IRL-South POM Update: C-23/C-44 Interconnect; C-44 Reservoir, STA (P9)
 - 1,2 IRL-South POM Update: C-23/C-44 Interconnect; C-44 Reservoir, STA (P9)
 - 1,2 CEPP and EAA Phase DPOM: EAA Reservoir, A-2 STA (P15)
 - 1,2 CEPP EAA Phase POM Update: A-2 STA Pre-Reservoir (P15)
 - 1,2 CEPP EAA Phase POM Update: CEPP North, EAA Reservoir (P4; P14N; P15)
- SOM VOLUME 4: WCAs-ENP-SDCS (COP-P1;P7; P13)**
 - 1,2 Combined Operational Plan WCP; Update for 8.5 SMA (P1)
 - 1,2 Western Everglades Restoration Project DPOM (P18)
 - 1,2 CEPP and EAA Phase DPOM Update: CEPP South Contract1 Interim Operations (P14S)
 - 1,2 CEPP DPOM Update: TTNS Phase 2, CEPP South, CEPP North (P5; P7; P14S; P14N; P14NW)
- SOM VOLUME 5: EAST COAST CANALS**
 - 1,2 IRL-South DPOM Update: C-23/C-24 Reservoirs, STA; C-25 Reservoir, STA (P9)
 - 1,2 IRL-South POM Update: C-23/C-24 STA (P9)
 - 1,2 Loxahatchee River Watershed Restoration Project DPOM (P16)
 - 2 Broward County WPA DPOM Update: C-11 Impoundment (P11)
 - Broward County WPA DPOM Update: WCA 3A and 3B Seepage Management (P11)
 - 2 Broward County WPA DPOM Update: C-9 Impoundment (P11)
 - Biscayne Bay Coastal Wetlands POM Update: L-31E Flow-way, Cutler Wetlands (P12)
 - 1,2 Biscayne Bay Southeastern Everglades Ecosystem Restoration DPOM (P19)
- SOM VOLUME 7: SOUTHWEST FLORIDA**
 - Picayune Strand Restoration Project POM Update: Miller Canal Plugging (P8)
 - 1,2 Picayune Strand POM Update: Flood Protection Features, Faka Union Canal Plugging (P8)



FOOTNOTES:
 1 Updated NEPA with Public Engagement Anticipated
 2 Updated Hydrologic Modeling Anticipated

#	RR	YELLOW BOOK NAME AND CODE
10	SC	Change Coastal Wellfield Operations (L)
11	GE	Site 1 Impoundment with ASR* (M)
16	GE	C-4 Structures (T)
19	LO	Taylor Creek/Nubbin Slough Storage and Treatment Area* (W)
25	GE	Modified Holy Land Wildlife Management Area Water Management Operations (DD)
26	SW	Modified Rotenberger Wildlife Management Area Water Management Operations (EE)
38	SC	C-111 Spreader Canal* (WW) – Phase 2 in Planning
42	GE	Lower East Coast Water Conservation (AAA)
48	GE	C-51* and Southern L-8 Reservoir (GGG)
50	LO	Lake Okeechobee Watershed Water Quality Treatment Facilities* (OPE)
56	GE	Acme Basin B (OPE)
57	NE	Lake Worth Lagoon Restoration* (OPE)
58	GE	Winsberg Farms Wetlands Restoration (OPE)
60	GE	Protect and Enhance Existing Wetlands Systems along Lox (Strozziulla Tract) (OPE)
64	SW	Southern CREW Project Addition (OPE)
65	SW	Lake Trafford Restoration (OPE)
66	SW	Henderson Creek/Belle Meade Restoration (OPE)
67	GE	Lake Park Restoration (OPE)
68	SC	Florida Keys Tidal Restoration (OPE)
69	ALL	Melaleuca Eradication and Other Exotic Plants (OPE)
2	NE	St. Lucie/C-44 Basin Storage Reservoir (B)
3	NE	Environmental Water Supply Deliveries to St. Lucie Estuary (C)
4	NE	Caloosahatchee Basin Storage Reservoir with ASR* (D)
5	NE	Environmental Water Supply Deliveries to Caloosahatchee Estuary (E)
7	GE	EAA Storage Reservoir (G)
8	GE	Everglades Rain-Driven Operations* (H)
9	GE	L-8 Project (K)
12	GE	Water Conservation Area 3A and 3B Levee Seepage Management (O)
13	GE	Western C-11 Diversion Impoundment and Diversion Canal (Q)
14	GE	C-9 Stormwater Treatment Area/Impoundment (R)
18	GE	L-31N Improvements for Seepage Management (V)
22	GE	Additional S-345 Structures* (AA)
27	GE	Construction of S-356 A and B Structures*(FF)
29	GE	Pump Station G-404 Modification (II)
32	SC	Modification to SDCS in southern portion of L-31N and C-111 (OO)
33	SW	Decomartmentalization of Water Conservation Area 3* (QQ)
36	NE	C-23, C-24, C-25 and Northfork and Southfork Basins Storage Reservoirs (UU)
55	GE	Pal Mar and J.W. Corbett Wildlife Management Area Hydropattern Restoration (OPE)
61	SC	Biscayne Bay Coastal Wetlands* (OPE) – Phase 2 in Planning
63	SW	Southern Golden Gate Estates Hydrologic Restoration (OPE)
1	LO	North of Lake Okeechobee Storage Reservoir (A)
28	LO	Lake Okeechobee Aquifer Storage and Recovery* (GG)
34	SW	Flow to Central Water Conservation Area 3A (RR)
39	GE	North Lake Belt Storage Area (XX)
43	GE	South Miami Dade County Reuse (BBB)
44	SW	Big Cypress/L-28 Interceptor Modification (CCC)
47	SC	Biscayne Bay Coastal Canals (FFF)
49	SC	West Miami Dade Reuse (HHH)
6	LO NE	Lake Okeechobee Regulation Schedule* (F)
15	GE	Central Lakebelt Storage Area (S)
17	GE	Bird Drive Recharge Basin(U)
20	GE	C-17 Backpumping (X)
21	GE	C-51 Backpumping to West Palm Beach Water Catchment Area (Y)
23	GE	Dade Broward Levee/Pennsuko Wetlands (BB)
24	GE	Broward County Secondary Canal System (CC)
30	GE	Loxahatchee National Wildlife Refuge Internal Canal Structures (KK)
31	GE	C-51 Regional Groundwater ASR (LL)
37	GE	Palm Beach County Agricultural Reserve Reservoir (VV)
40	GE	Divert WCA3 flows to Central Lake Belt Storage (YY)
41	GE	Divert WCA3 flows to Central Lake Belt Storage Area (ZZ)
45	NE	Caloosahatchee Backpumping with STA (DDD)
46	GE	Flows to Eastern Water Conservation Area (EEE)
51	LO	Lake Okeechobee Tributary Sediment Dredging/Phosphorus Removal (OPE)
52	LO	Lake Istokpoga Regulation Schedule Modification (OPE)
54	SW	Miccosukee Water Management Plan (OPE)
62	SC	Restoration of Pineland & Hardwood Hammocks in C-111 Basin (OPE)
35	SC	Re-route Miami-Dade Water Supply Deliveries (SS)
53	SW	Seminole Tribe Big Cypress Water Conservation Plan (East and West) (OPE)
59	GE	Palm Beach County Wetlands-based Water Reclamation (OPE)



CERP COMPONENTS STATUS AND LOCATIONS BY RECOVER REGIONS

NOTE: Authorized projects are listed on the front page of this Integrated Delivery Schedule Placemat

MAP | TABLE LEGEND

Approximate Location for Each Component

RECOVER REGIONS (RR)

- Lake Okeechobee (LO)
- Northern Estuaries (NE)
- Greater Everglades (GE)
- Southwest (SW)
- Southern Coastal Systems (SC)

Foundation Projects

TABLE

* Projects with Phases

RR RECOVER Regions

*SOM Volume 1 (System-Wide Operational Framework for C&SF and CERP) and SOM Volume 6 (Upper St. Johns River Basin) will not have CERP POMs.