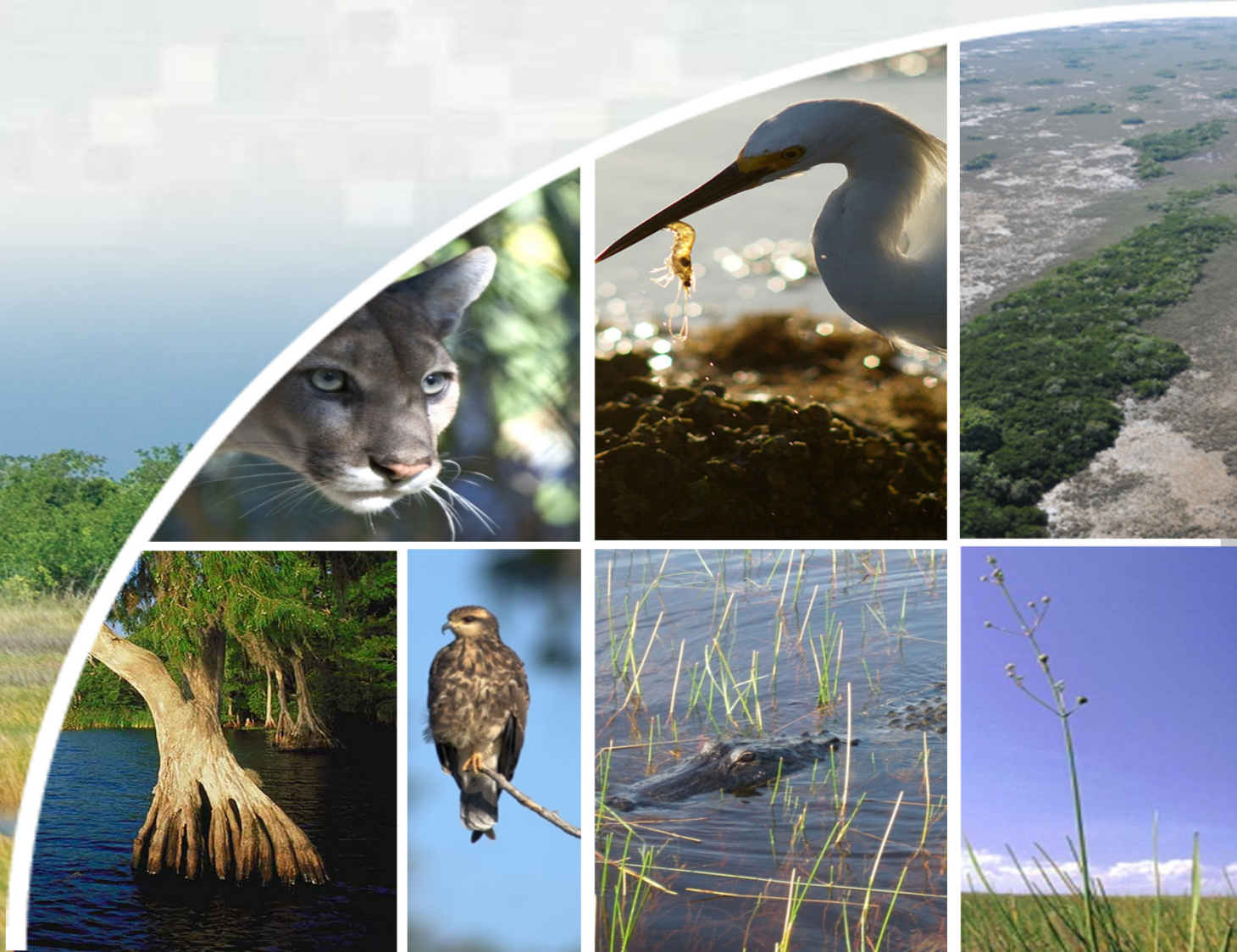


REStoration, COordination, VERification (RECOVER) and Adaptive Assessment and Monitoring

Danette Goss, Project Manager
U.S. Army Corps of Engineers
Jacksonville District



18 November 2022
Integrated Delivery Schedule
Workshop



WHO ARE RECOVER?

- Multi-agency team of scientists, modelers, planners, and resource specialists
- Conducts **scientific and technical evaluations**
- Applies a **system-wide perspective** to the planning and implementation of CERP
- **Communicates** and **coordinates science** to ensure that CERP goals and purposes are achieved



WHAT ARE THE FUNCTIONS AND ROLES OF RECOVER?

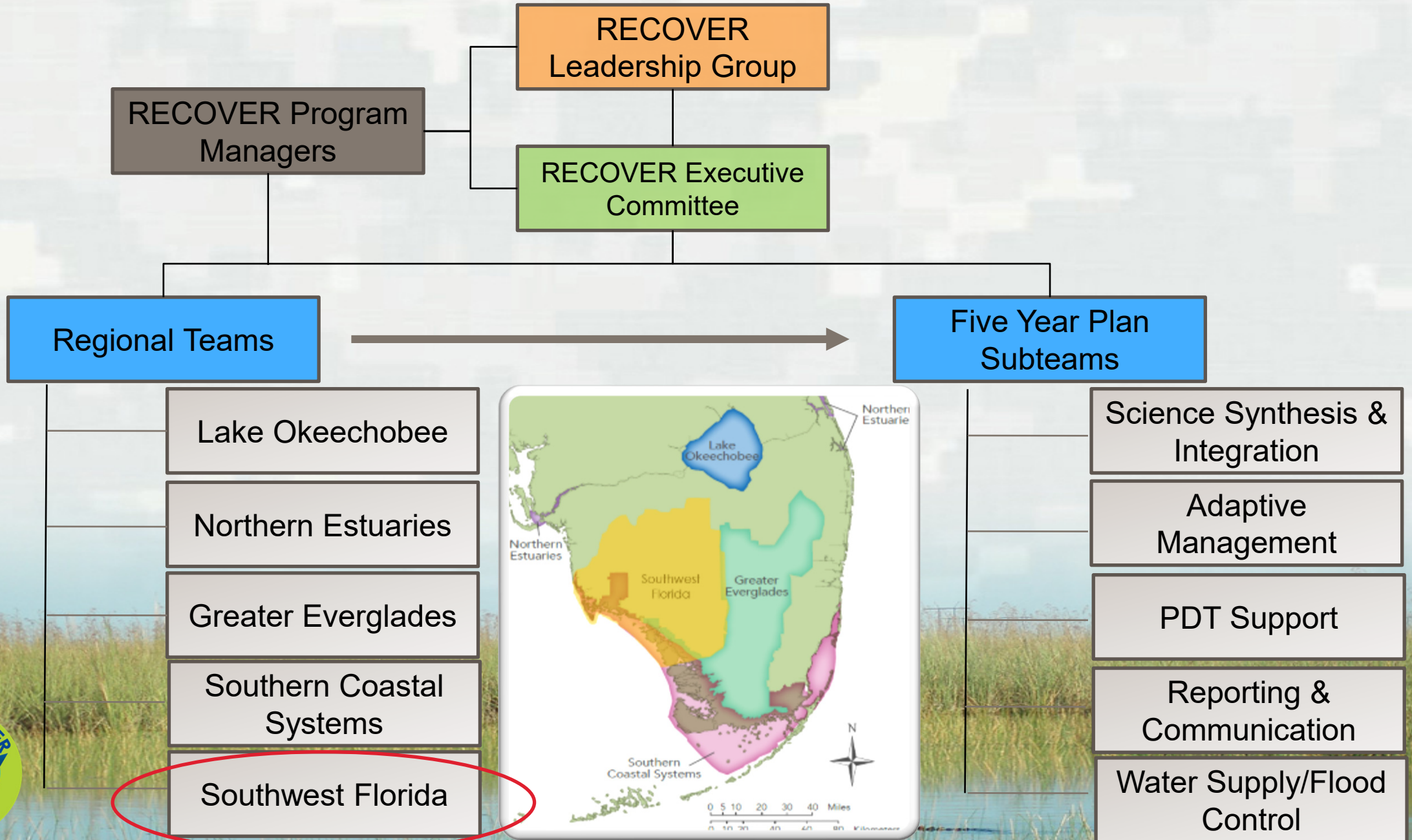
28



- Ensures CERP implementation is guided by the best available science
- Three Major Missions:
 - **Assessment:** measuring performance of projects through research and monitoring
 - **Evaluation:** forecasting project performance through predictive modeling and performance measures
 - **Planning:** integrating RECOVER with planning and operation of the system



HOW IS RECOVER ORGANIZED?





SOUTHWEST FLORIDA MODULE: NEW 2022!

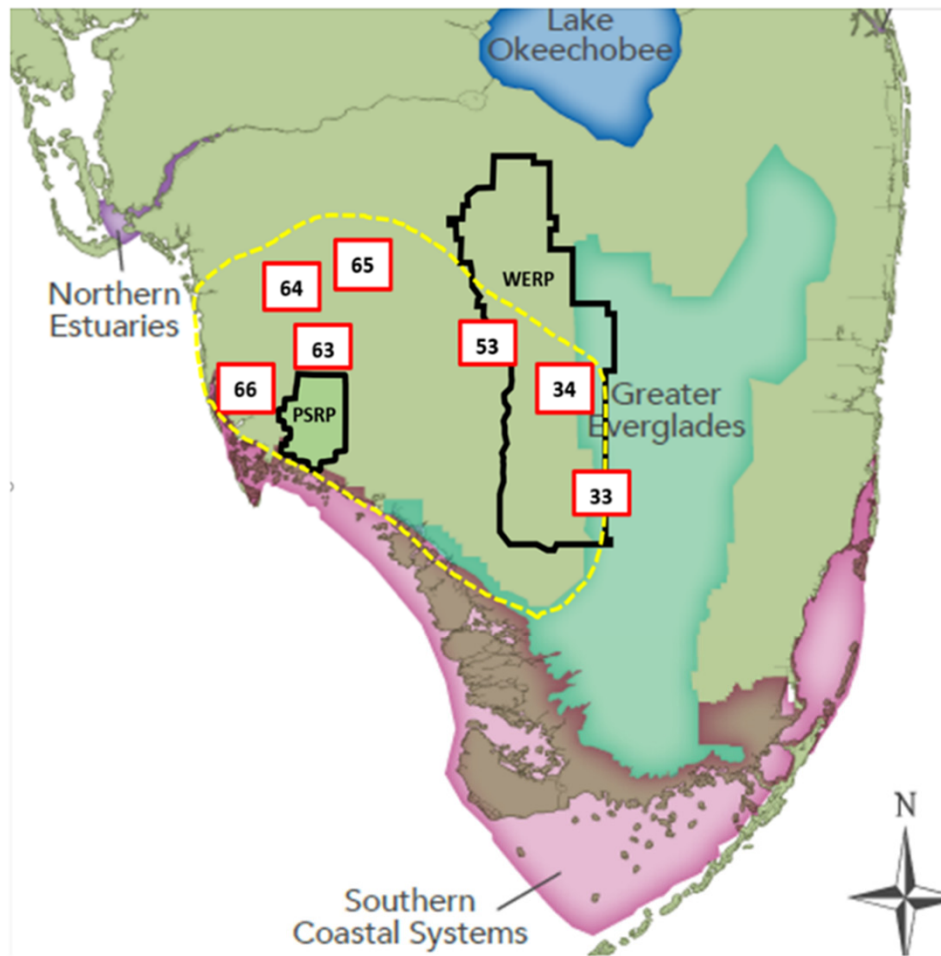


53 Yellow Book Components

--- 2005 Big Cypress CEM boundary

— CERP Projects

Yellow Book Components		
Number	Name	Code
33	Decomartmentalization of WCA 3A	QQQ
34	Flow to Central WCA 3A	RR
44	Big Cypress/L-28 Interceptor Modifications	CCC
63	Southern Golden Gate Estates Hydrologic Restoration	OPE
64	Southern CREW Project	OPE
65	Lake Trafford Restoration	OPE
66	Henderson Creek/Belle Meade Restoration	OPE



EXPANDING THE RECOVER FOOTPRINT



The Comprehensive Everglades Restoration Plan (CERP) footprint is sub-divided into similar landscapes, each representing a Restoration, COordination, VERification (RECOVER) module where monitoring is applied to address uncertainties and inform progress toward achieving CERP goals and objectives. In October 2021 RECOVER initiated development of a Southwest Florida Module to apply RECOVER's programmatic evaluation and assessment framework to the Greater Big Cypress Basin (GBCB). The GBCB is more than just a single self-contained watershed, the conservation lands within the region function as a central hub in the southern Florida peninsula that contain and connect multiple watersheds between the Big Cypress and Everglades ecosystems.

The overlap with the Greater Everglades and Southern Coastal Systems modules was purposeful. Overlap allows regional experts to work together in areas of the system that are more varied in character such as transitional areas between forested wetlands and sawgrass prairies, and inland and coastal systems. Overlap increases coordination and communication between regions and enhances RECOVER's system-wide assessment mission.

Getting the water right throughout the GBCB could translate to more natural downstream flows to the Tribal Reservations, Everglades National Park, Big Cypress National Preserve, Florida Panther National Wildlife Refuge, Fakahatchee Strand Preserve State Park and the upper southwestern coast. This new RECOVER Module gives the western regions a voice at the Everglades restoration table and potentially paves the way towards a path to improved evaluation and assessment tools. Formulation of this module increases the extent of Everglades wetland system-wide knowledge and increases the understanding of the needs associated with each region. It also provides a means to evaluate CERP performance across the entirety of the CERP footprint and gain knowledge to reduce uncertainties to further inform CERP design and implementation.





SOUTHWEST FLORIDA MODULE: NEXT STEPS 2023



- Develop Assessment Tools
- Conceptual Ecological Models
- Performance Measures
- Ecological Planning Tools
- Develop Monitoring Network



Big Cypress National Preserve

